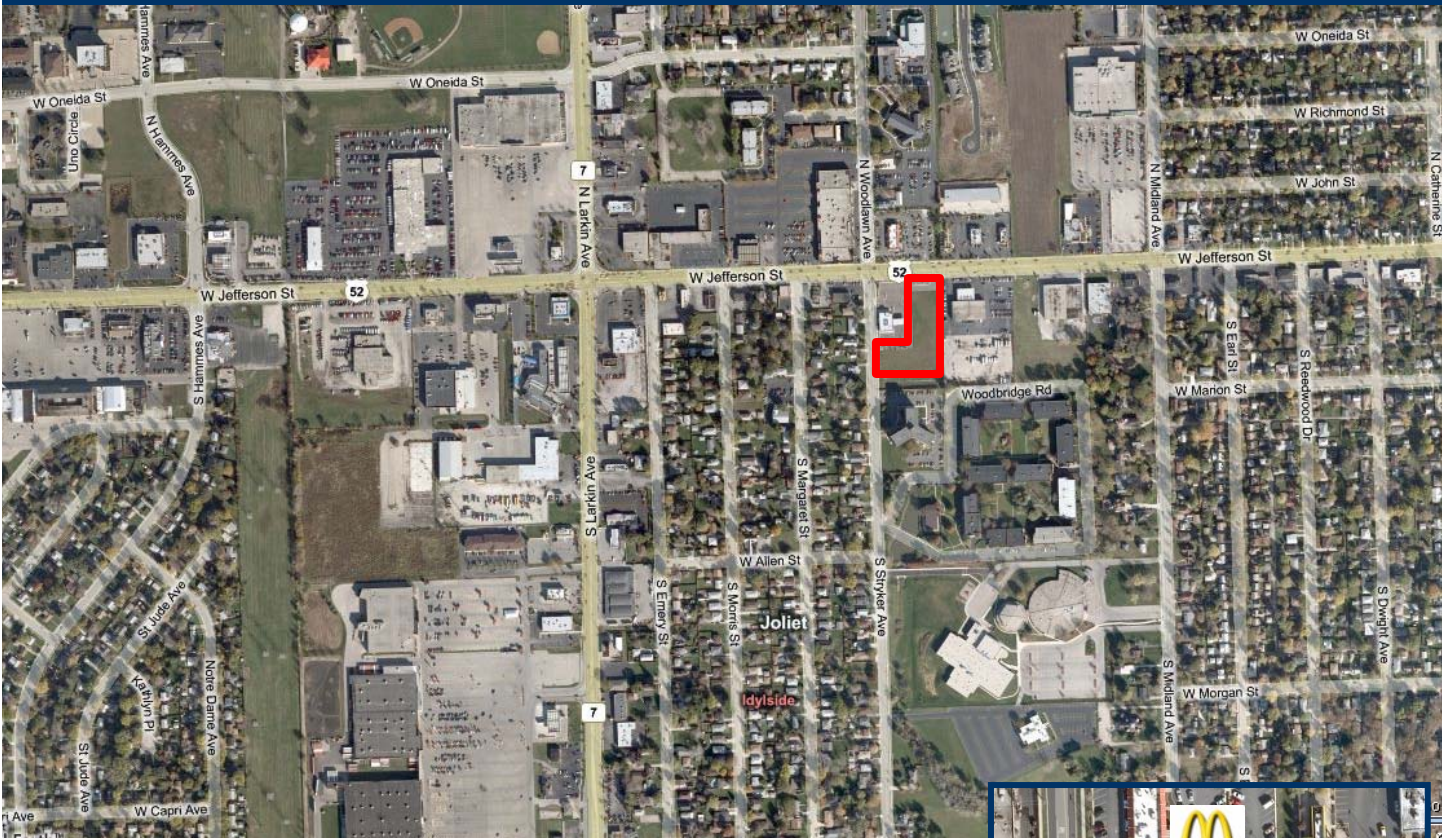


AVAILABLE LAND FOR SALE

Jefferson (Route 52) and Stryker in Joliet, Illinois



Fully improved (with detention) and zoned 1.75-acre lot available for purchase in busy retail section of Joliet. Site wraps a Bank of America branch office and McDonald's is across the street.

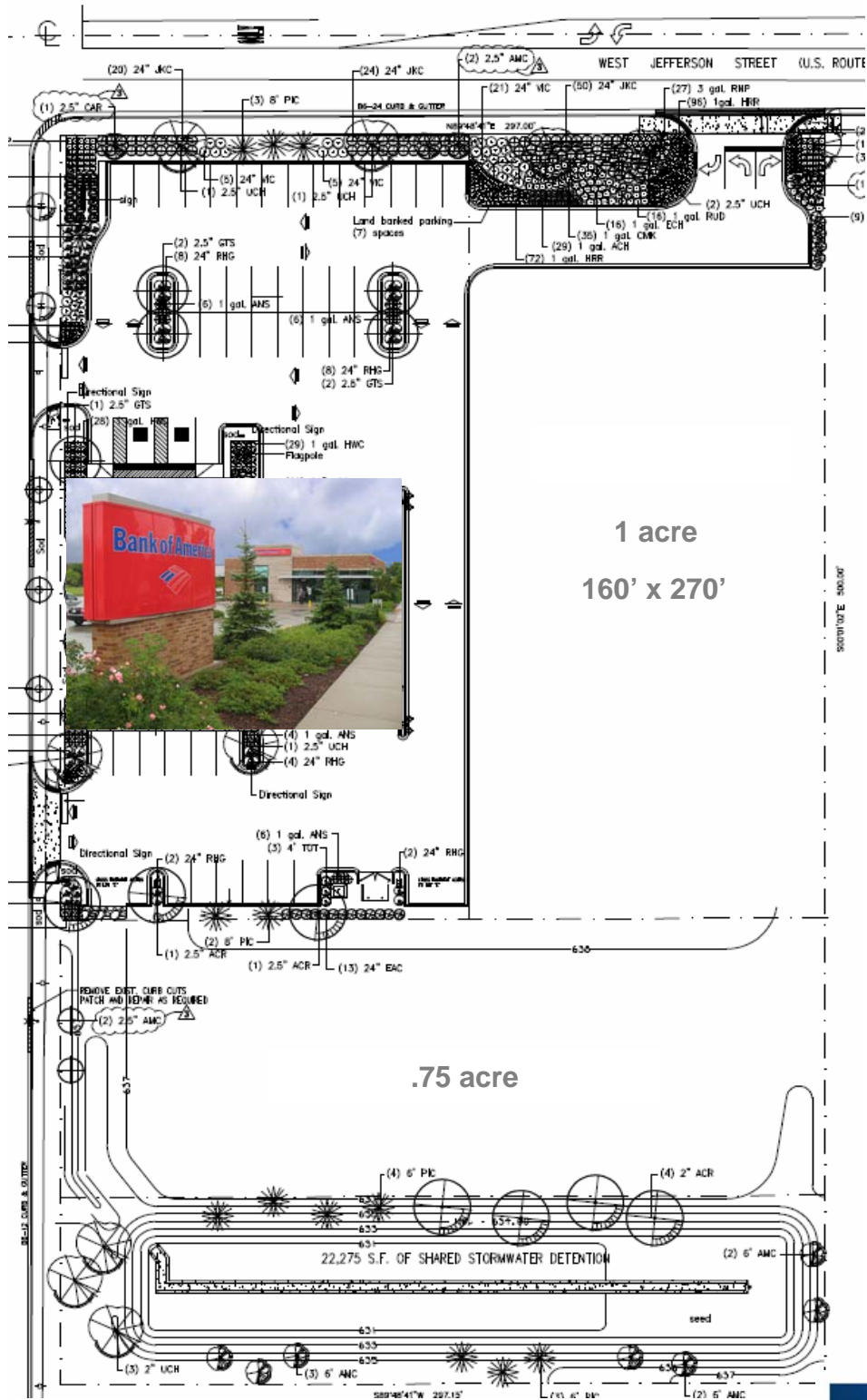


PREFERRED
Development

Joe Padorr 312.327.2700 ext. 229

joe@preferreddevelopment.com

Site Plan



Joe Padorr, Preferred Development: 312.327.2700 ext. 229

www.preferreddevelopment.com

